

CUBE2, CUBE4

LENS MAINTENANCE INSTRUCTIONS



BEFORE YOU BEGIN

Read and follow all safety instructions



WARNING

RISK OF FIRE, EXPLOSION AND ELECTRIC SHOCK

- This product should be installed, inspected, and maintained by a qualified electrician only, in accordance with the NEC (National Electric Code) and all local codes.
 - Turn off electrical power before inspection, installation or removal.
 - Use only UL (or other NRTL) approved wire for input/output connections.
 - Make sure LEDs and drivers are cool to touch when performing maintenance.
- Make sure the supply voltage is the same as the rated voltage of the luminaire.
- Do not install in a hazardous atmosphere, except where the ambient temperature does not exceed the rated operating temperature of the fixture.
 - Keep tightly closed when in operation



Prepare Electrical Wiring



Electrical Requirements

Must check if the local voltage range is correspond with the working voltage of the fixture. Use min. 75°C supply.



Grounding Instructions

The grounding and bonding of the overall system shall be done in accordance with NEC Article 600 and local codes.



Follow all applicable safety procedures and use Personal Protective Equipment such as hardhats, safety glasses, reflective vest, electrical safety gloves, fall protection equipment and safety toe boots during the installation, operation, and maintenance of the luminaire.



866-471-7711
utopialighting.com
info@utopialighting.com

Contractor is responsible for adequately reinforcing ceilings to support luminaire weight. Utopia Lighting accepts no responsibility for inadequately reinforced ceilings. The information contained in this drawing is the sole property of Utopia Lighting. Any reproduction in part or whole is prohibited and warranty is voided.

WARNING:



RISK OF FIRE AND ELECTRICAL SHOCK. FIXTURE MUST BE INSTALLED BY A QUALIFIED ELECTRICIAN ONLY IN ACCORDANCE WITH NATIONAL, LOCAL BUILDING AND ELECTRICAL CODES. DISCONNECT POWER AT ELECTRICAL PANEL BEFORE SERVICING.

CUBE2, CUBE4

LENS MAINTENANCE INSTRUCTIONS

LENS INSTALLATION



1 Snap in and insert one end with gentle force.



2 Run hands through the length until about 2/3 way and stop.



3 Skip the remaining 1/3 and go to the end of the fixture. Repeat #1.



4 Run hands through the opposite direction to fully close the lens.



5 Make sure the lens is completely and properly installed all the way.



866-471-7711
utopialighting.com
info@utopialighting.com

Contractor is responsible for adequately reinforcing ceilings to support luminaire weight. Utopia Lighting accepts no responsibility for inadequately reinforced ceilings. The information contained in this drawing is the sole property of Utopia Lighting. Any reproduction in part or whole is prohibited and warranty voided.

WARNING:



RISK OF FIRE AND ELECTRICAL SHOCK. FIXTURE MUST BE INSTALLED BY A QUALIFIED ELECTRICIAN ONLY IN ACCORDANCE WITH NATIONAL, LOCAL BUILDING AND ELECTRICAL CODES. DISCONNECT POWER AT ELECTRICAL PANEL BEFORE SERVICING.

CUBE2, CUBE4

LENS MAINTENANCE INSTRUCTIONS

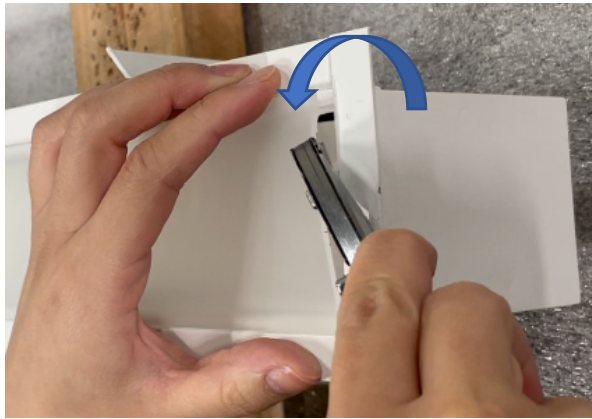
LENS REMOVAL

TOOL(S) NEEDED:



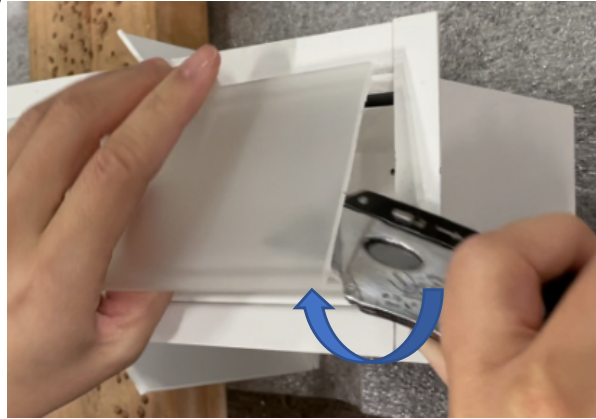
Utility Knife

* Important to use with the utility knife; improper tool(s) may cause it to break and injury.



1

Insert blade and gently lift at an angle to remove one leg of the lens first.



2

Then aim the blade towards the other leg of the same side to completely remove one side.



3

Gently lift up and work your way through the length up to about 2/3 way and stop.



866-471-7711
utopialighting.com
info@utopialighting.com

Contractor is responsible for adequately reinforcing ceilings to support luminaire weight. Utopia Lighting accepts no responsibility for inadequately reinforced ceilings. The information contained in this drawing is the sole property of Utopia Lighting. Any reproduction in part or whole is prohibited and warranty voided.

WARNING:

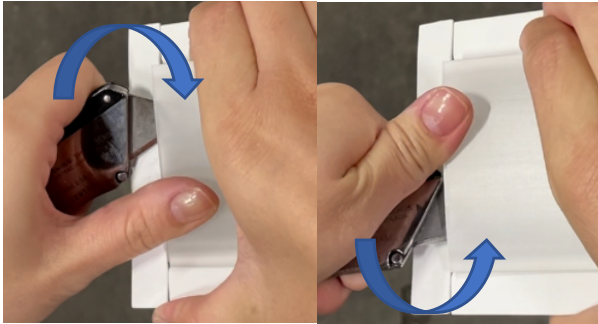


RISK OF FIRE AND ELECTRICAL SHOCK. FIXTURE MUST BE INSTALLED BY A QUALIFIED ELECTRICIAN ONLY IN ACCORDANCE WITH NATIONAL, LOCAL BUILDING AND ELECTRICAL CODES. DISCONNECT POWER AT ELECTRICAL PANEL BEFORE SERVICING.

CUBE2, CUBE4

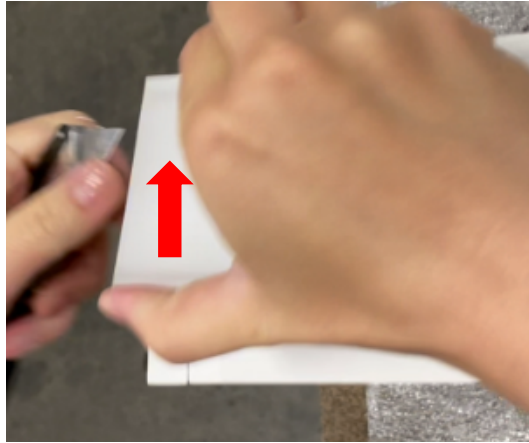
LENS MAINTENANCE INSTRUCTIONS

LENS REMOVAL



4

Skip 1/3 remaining and go to the end of the fixture.
Repeat #1 & #2.



5

Remove the lens completely.



866-471-7711
utopialighting.com
info@utopialighting.com

Contractor is responsible for adequately reinforcing ceilings to support luminaire weight.
Utopia Lighting accepts no responsibility for inadequately reinforced ceilings.
The information contained in this drawing is the sole property of Utopia Lighting.
Any reproduction in part or whole is prohibited and warranty voided.

WARNING:



RISK OF FIRE AND ELECTRICAL SHOCK. FIXTURE MUST BE INSTALLED BY A QUALIFIED ELECTRICIAN ONLY IN ACCORDANCE WITH NATIONAL, LOCAL BUILDING AND ELECTRICAL CODES. DISCONNECT POWER AT ELECTRICAL PANEL BEFORE SERVICING.